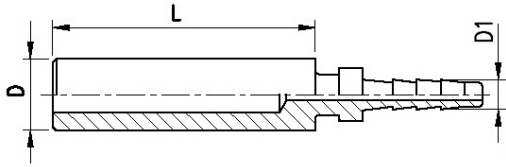


RACCORDI PER CONTROLLO SISTEMI IDRAULICI
FITTINGS FOR CHECK HYDRAULIC PLANT

**CODOLO
STANDPIPE**

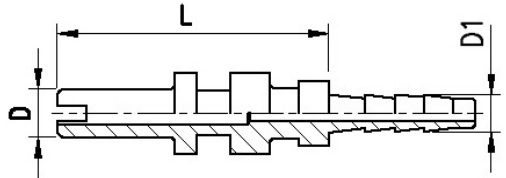


Codice Code	D	L	D1
P6MAN2 ^[X]	6	22	2
P8MAN2 ^[X]	8	22	2
P6MAN2.5 ^[X,+]	6	22	2,5
P8MAN2.5 ^[X,+]	8	22	2,5

[X] Per i raccordi in acciaio inox aggiungere al codice la lettera X
Add the X letter at the code to order stainless fittings

[+] Solo su richiesta / On request

**PERNO A SPINA
PLUG-IN CONNECTION**

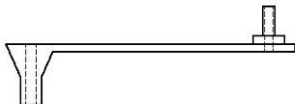


Codice Code	D	L	D1
SP325 ^[X]	3,25	19	2
SP325.5 ^[X,+]	3,25	19	2,5

[X] Per i raccordi in acciaio inox aggiungere al codice la lettera X
Add the X letter at the code to order stainless fittings

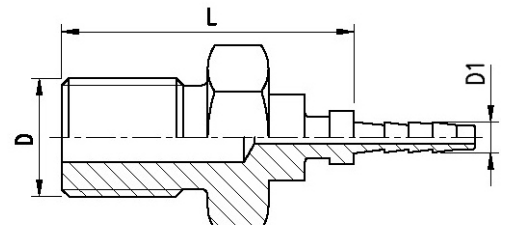
[+] Solo su richiesta / On request

**PARAPOLVERE
DUST PROTECTION CUP**



**Codice
Code**
PR16

**MASCHIO GAS
BSP MALE FITTING**



Codice Code	D	L	D1
MF18MAN2 ^[X]	1/8" G	24	2
MF18MAN2.5 ^[X,+]	1/8" G	24	2,5
MF10MAN2 ^[X,+]	M10X1	24	2

[X] Per i raccordi in acciaio inox aggiungere al codice la lettera X
Add the X letter at the code to order stainless fittings

[+] Solo su richiesta / On request

Per tubi vedi pagine: C1 → C2

For hoses see pages: C1 → C2