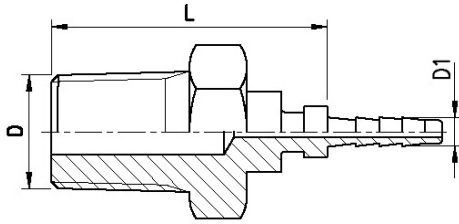


RACCORDI PER CONTROLLO SISTEMI IDRAULICI
FITTINGS FOR CHECK HYDRAULIC PLANT

MASCHIO NBT
NPT MALE FITTING

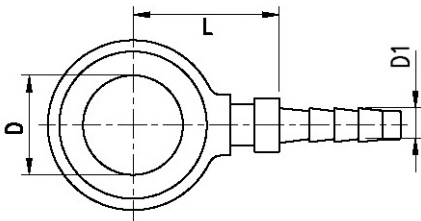


Codice Code	D	L	D1
NP18MAN2 ^[X]	1/8" NPT	26	2
NP18MAN2.5 ^[X,+]	1/8" NPT	26	2,5

[X] Per i raccordi in acciaio inox aggiungere al codice la lettera X
Add the X letter at the code to order stainless fittings

[+] Solo su richiesta / On request

RACCORDO AD OCCHIO
BANJO

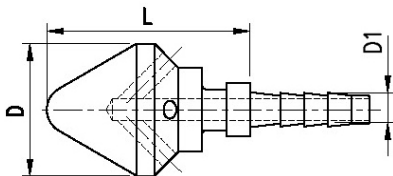


Codice Code	D	L	D1
OC6-82 ^[X]	6	12	2
OC8-82 ^[X]	8	12	2
OC6-82.5 ^[X,+]	6	12	2,5
OC8-82.5 ^[X,+]	8	12	2,5
OC10-82 ^[X,+]	10	24,5	2

[X] Per i raccordi in acciaio inox aggiungere al codice la lettera X
Add the X letter at the code to order stainless fittings

[+] Solo su richiesta / On request

RACCORDO PER SPURGO
DISCHARGING FITTING

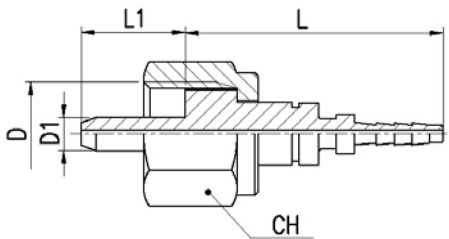


Codice Code	D	L	D1
PS252 ^[X]	11	17	2
PS252.5 ^[X,+]	11	17	2,5

[X] Per i raccordi in acciaio inox aggiungere al codice la lettera X
Add the X letter at the code to order stainless fittings

[+] Solo su richiesta / On request

FEMMINA GIREVOLE CON SPINA
SWIVEL FEMALE PLUG-IN CONNECTION



Codice Code	D	D1	L	L1	CH
PPG10	M8x1	3,3	18	8	10

Per tubi vedi pagine: C1 → C2

For hoses see pages: C1 → C2