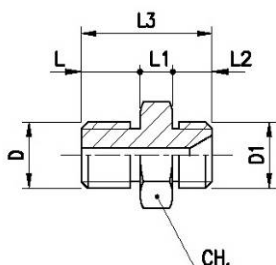


**RACCORDI A PRESSURE PER TUBO FRENO A NORMA SAE J1401**  
**FITTINGS FOR BRAKE HOSE ACCORDING TO SAE J1401**

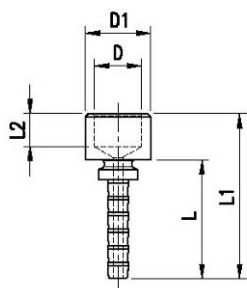
**NIPPLO**  
**NIPPLES**



Codice Code	D	D1	L	L1	L2	L3	CH	Mat.
NMCA0-0N <sup>[+]</sup>	M10x1.25	M10x1.25	9	5	8	22	14	AN
NMCA1-1N	M10x1	M10x1	9	5	8	22	14	AN
NMCA2-2N <sup>[+]</sup>	3/8"-24	3/8"-24	9	5	8	22	14	AN
NMC00-0 <sup>[+]</sup>	M10x1.25	M10x1.25	9	5	8	22	14	AL
NMC01-1 <sup>[+]</sup>	M10x1	M10x1	9	5	8	22	14	AL
NMC02-2 <sup>[+]</sup>	3/8"-24	3/8"-24	9	5	8	22	14	AL

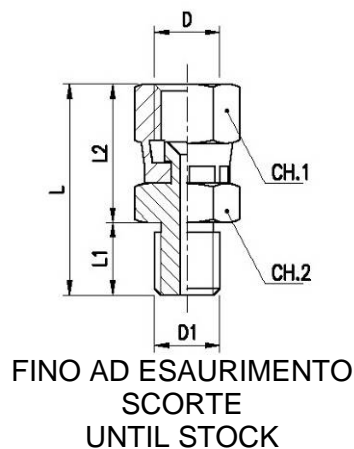
[+] Solo su richiesta / On request

**PERNO A SALDARE**  
**TIN TO BE WELD**



Codice Code	D	D1	L	L1	L2	Materiale Material
TSP0705	5,2	10	18	25	5	Carbon Steel

**ADATTATORE MASCHIO/FEMMINA**  
**MALE/FEMALE ADAPTER**



Codice Code	D	D1	L	L1	L2	CH1	CH2	Mat.
AMFGS0-0 <sup>[+]</sup>	M10x1.25	M10x1.25	30	10	20	14	14	AL
AMFGS0-1 <sup>[+]</sup>	M10x1.25	M10x1	30	10	20	14	14	AL
AMFGS0-2 <sup>[+]</sup>	M10x1.25	3/8"-24	30	10	20	14	14	AL
AMFGS1-0 <sup>[+]</sup>	M10x1	M10x1.25	30	10	20	14	14	AL
AMFGS1-1 <sup>[+]</sup>	M10x1	M10x1	30	10	20	14	14	AL
AMFGS1-2 <sup>[+]</sup>	M10x1	3/8"-24	30	10	20	14	14	AL
AMFGS2-0 <sup>[+]</sup>	3/8"-24	M10x1.25	30	10	20	14	14	AL
AMFGS2-1 <sup>[+]</sup>	3/8"-24	M10x1	30	10	20	14	14	AL
AMFGS2-2 <sup>[+]</sup>	3/8"-24	3/8"-24	30	10	20	14	14	AL

[+] Solo su richiesta / On request

Adatto per i nostri tubi: E1 → E2

Suitable for our hoses: E1 → E2